



DOI: <https://doi.org/10.38035/dijemss.v7i1>
<https://creativecommons.org/licenses/by/4.0/>

The Symbolic and Aesthetic Value of Traditional Tableware: A Systematic Review

Victor M I Mambraku¹, Nuning Yanti Damayanti², Yannes Martinus Pasaribu³, Adhi Nugraha⁴

¹Faculty of Art and Design, Bandung Institute of Technology (ITB), West Java, Indonesia, vmambraku698@gmail.com

²Faculty of Art and Design, Bandung Institute of Technology (ITB), West Java, Indonesia, nuning@itb.ac.id

³Faculty of Art and Design, Bandung Institute of Technology (ITB), West Java, Indonesia, martinus@itb.ac.id

⁴Faculty of Art and Design, Bandung Institute of Technology (ITB), West Java, Indonesia, adhinugraha@itb.ac.id

Corresponding Author: nuning@itb.ac.id²

Abstract: Traditional tableware reflects significant symbolic and aesthetic values that help maintain cultural identity in the era of globalization. However, the shift towards modern products has reduced the role of traditional tableware, leading to a decline in people's understanding of its cultural significance. The study analyzed the literature that highlights the role of traditional tableware in various cultures, focusing on its spiritual, social, and ecological aspects. Using a systematic approach, this study identifies sustainable education and design-based preservation strategies that uphold the symbolic meanings of traditional tableware. Our methods include the analysis of literature and cross-cultural perspectives of different ethnicities. We highlight the importance of integrating traditional tableware into modern education and design to strengthen people's connection to their cultural identity. Our findings suggest that cultural preservation can be enhanced by promoting aesthetics, revitalizing symbolic values, and adopting an ecology-based approach that supports the sustainability of local cultural identity. The study proposes a conceptual framework that guides cultural preservation strategies in the face of the challenges of globalization, offering practical implications for education and product design relevant to modern society.

Keywords: Traditional Cutlery, Symbolic Value, Aesthetics, Cultural Preservation, Modernization, Cultural Identity.

INTRODUCTION

In many cultures around the world, traditional tableware is not merely a functional tool but a cultural artifact rich in symbolic and aesthetic meaning. Its function extends beyond food consumption, reflecting the value systems upheld by the community, ranging from social status, spiritual relations with ancestors, to ecological balance imprinted in daily life (Liliweri, 2019; Gupta, 2022). Various forms of tableware, such as carved wooden bowls, spoons from coconut

shells, or clay plates with distinctive motifs, not only demonstrate the aesthetic skills of the craftsman, but also represent the cosmology, identity, and existence of a community (Ustianti, 2025; Shinta, 2025; Ariani, 2024).

The symbolism inherent in this tableware makes it an integral part of the intangible cultural heritage that is passed down from generation to generation through social practices and rituals (Wu et al., 2022; Lee, 2023). In the process, tableware not only serves as a medium of value delivery, but also as a means of building a spiritual connection with ancestors and a reminder of communal identity (Partarakis et al., 2021; Santilli, 2015). These values are manifested in the selection of natural materials, hereditary manufacturing techniques, and ornaments that contain certain religious and ecological meanings (Larson et al., 2025; Madsen, 2022).

However, the dynamics of modernization and globalization have resulted in the desacralization of these cultural artifacts. Modern industrial products, which emphasize efficiency, comfort, and homogenization of global aesthetics, are gradually replacing traditional tableware in people's daily lives, especially in urban areas (Walker et al., 2019; Yu et al., 2024). This shift not only has an impact on the decrease in the frequency of use, but also on the increasing loss of the cultural and symbolic meaning contained in it (Taşkın, 2016). When meaningful aesthetic elements are replaced by mass utilitarian products, tableware is no longer seen as a cultural representation, but as a mere object of consumption (Hamling & Richardson, 2010; Bikesh & Suraj, 2020).

This situation is exacerbated by the lack of attention of the younger generation to traditional values. Exposed to consumptive cultures and instant lifestyles, they tend to lack a deep understanding of the historical and symbolic contexts of traditional tableware used by previous generations. (Azizi & Anam, 2023; Aini & Winarno, 2022). This loss of appreciation has an impact on the weakening of local cultural identity and the decline of social cohesion in society. If this condition continues to be left unchecked, traditional tableware is at risk of depreciation, which not only threatens its material sustainability, but also jeopardizes its social function as a marker of collective identity (Rosenmann et al., 2016; Pagano, 2023; Kobayashi, 2025).

Therefore, it is crucial to build a more comprehensive academic understanding of the symbolic and aesthetic aspects of traditional tableware, not only as part of cultural documentation, but also as a first step in the formulation of contextual and relevant preservation strategies. One approach that can be used is through a systematic review of the scientific literature that discusses these values in the last decade (2014–2024). This method allows researchers to map trends, identify study gaps, as well as draw conceptual synthesis of various approaches that have been used in understanding traditional tableware (Sharma, 2014).

Taking into account the complexity of the relationship between cultural artifacts, societal identities, and the challenges of modernity, this study is designed to answer the key question: "What are the current trends in traditional cutlery related to cultural preservation discussed in the literature from 2014 to 2024?" This question is both exploratory and reflective, aiming to open a discourse on the role of traditional tableware in shaping the cultural experience of contemporary society.

In addition, this study aims to explore the symbolic values inherent in each type of traditional tableware, as well as evaluate the aesthetic dimensions represented through shapes, ornaments, and manufacturing techniques (Mohyeddin, 2024; Giddens, 2023). This approach touches not only the visual or artistic side, but also the sociological, anthropological, and ecological dimensions that accompany its production and use. Through this mapping, this research is also expected to be able to provide strategic recommendations in the preservation of traditional tableware, both through integration in contemporary design and in the form of cultural education and advocacy programs (Shabrilia et al., 2022; Patra, n.d.; Vishwakarma et al., 2025).

Thus, the main contribution of this study lies not only in descriptive documentation, but in the effort to develop an in-depth conceptual framework on the importance of aesthetics and symbolism as part of cultural sustainability strategies. This systematic review is expected to strengthen the collective awareness of the importance of preserving everyday cultural artifacts that seem simple, yet hold profound significance for the sustainability of community identity in the face of the challenge of global cultural homogenization.

METHOD

This study follows the guidelines of *Preferred Reporting Items for Systematic Reviews and Meta-Analyses* (PRISMA) in conducting a systematic review (Booth et al., 2021; Vrubel, 2015). The SLR approach allows researchers to comprehensively and objectively cover the literature with planned and structured steps. Conventional literature reviews that rely on random searches may not cover all topics equally (Haddaway et al., 2020; Fink, 2019). In this study, the research strategy is divided into several stages: search strategy, study selection, and data extraction.

Search Strategy

In conducting this systematic review, we developed a search strategy to find relevant literature on traditional tableware. This strategy is applied to one main database: Scopus. Databases are widely known for indexing only high-quality sources that have been selected with strict selection procedures (Dorsch et al., 2018). The validity of the data and the comprehensive coverage of information became a major concern in the scientometric literature, especially after the launch of Scopus (Mika et al., 2016). Scopus has been recognized as a reliable source of bibliographic data, gaining significance all the time (Zhu & Liu, 2020).

Scopus, as one of the most extensive international bibliographic databases, is considered an important source for academic tasks such as journal selection and bibliometric analysis (Liu, 2025). Therefore, Scopus offers a powerful tool for measuring scientific publishing trends (Cavacini, 2015) and is the most widely used database for bibliographic analysis (Singh et al., 2021). The main factors that drive the selection of this database are the ease of use, performance, and additional features offered.

To ensure comprehensive and relevant coverage, the literature search was conducted through title and abstract analysis using a combination of keywords as well as phrases that are closely related to the focus of the research. Keywords are grouped into three main domains, namely: symbolism, aesthetic, and cultural preservation. In an effort to identify specific and contextual literature according to the topic of this study, the search used the following keywords: "traditional tableware", "symbolic value", "cultural aesthetics", "cultural preservation", "local heritage", "community engagement", "cultural education", "conservation strategy", "local culture", "cultural identity", and "traditional products".

The keywords were chosen to capture the conceptual and practical dimensions related to the symbolic and aesthetic value of traditional tableware, as well as its role in the preservation of local culture. This search strategy allows for a selection of relevant and in-depth literature within a specified time frame.

Study Selection

A systematic literature selection process is carried out to ensure that only documents relevant to the research topic are included in the final analysis. Initially, a literature search yielded a total of 259 documents from the Scopus database. The initial screening is conducted based on two main criteria: (1) published between 2014 and 2024 and (2) available in English. Of these results, 50 documents were issued for not meeting the language criteria, and 19 documents were published outside the set time frame. This process resulted in 150 documents that passed to the next stage.

The second stage focuses on the elimination of duplication and selection using automation tools. A total of 80 duplicate documents were deleted, leaving 70 documents. Of these, 20 documents were marked as irrelevant by automation tools, removed for technical reasons or content incompatibilities, as well as through the evaluation of titles and abstracts. This process reduces the number of documents to 50 for further screening.

At the feasibility evaluation stage, 5 documents were issued because they did not meet the methodological criteria (2 documents), were not relevant to the theme of cultural preservation (2 documents), or were of low quality/not peer-reviewed (1 document). After going through this rigorous screening process, as many as 45 documents managed to enter the final set for further analysis. As an additional step, this approach ensures that the scope of research becomes more comprehensive and relevant, especially as it relates to symbolism, aesthetics, and cultural preservation. Finally, the 45 documents that passed this selection represent the core literature that will be used to support the review and analysis of the research.

Data Extraction

Through the research selection process, we collected a total of 45 items that met the inclusion criteria and were relevant to our research. We conduct a comprehensive full-text reading of each article to ensure the suitability and quality of the research. Key data from each article that meets the inclusion criteria is compiled into a Microsoft Excel spreadsheet for easy further analysis.

This data is then analyzed thematically to identify emerging trends and patterns in the literature. With this approach, our research seeks to summarize the current knowledge on the preservation of traditional tableware, focusing on its symbolic and aesthetic value, as well as the impacts of modernization and globalization faced.

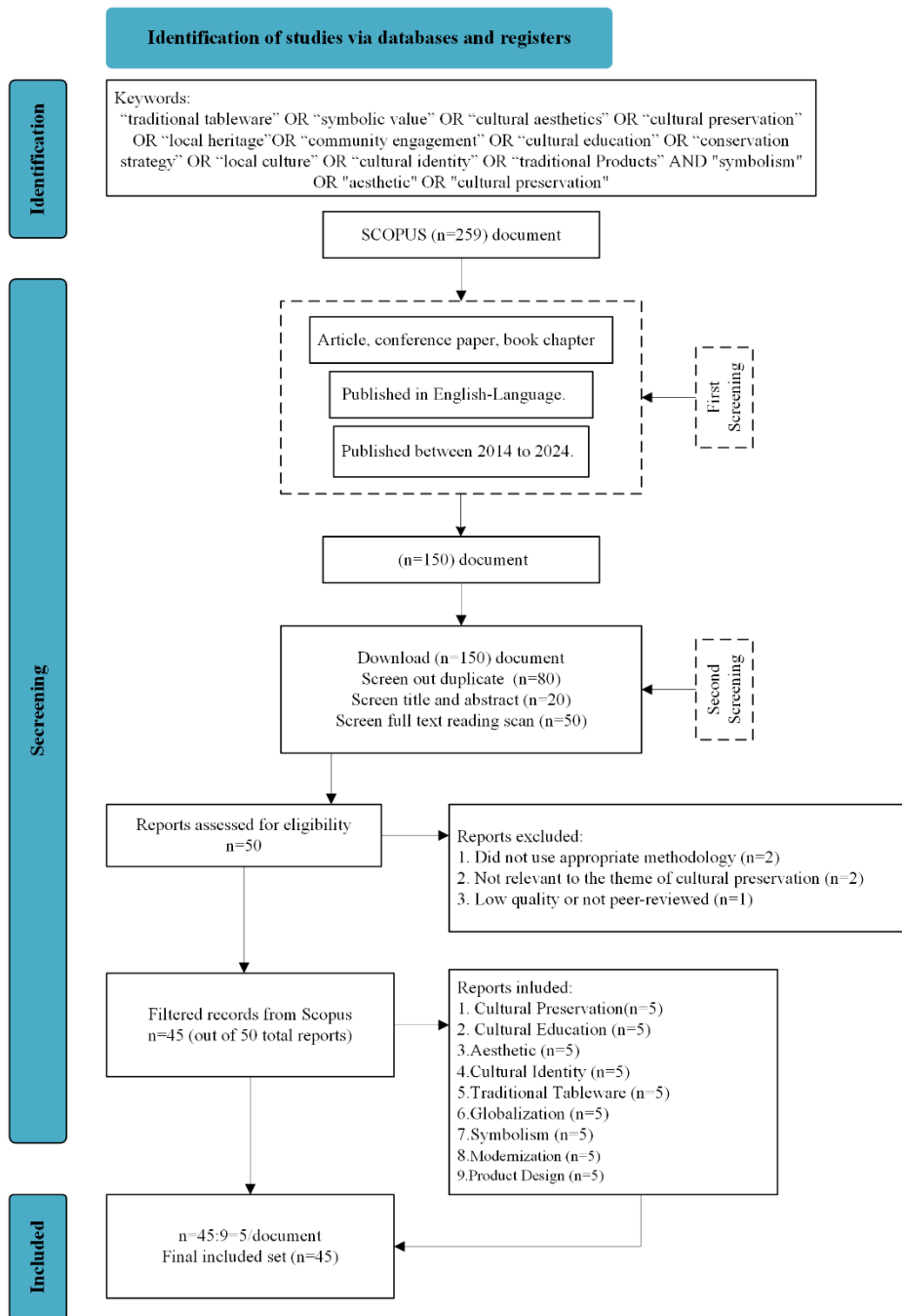


Figure 1. Article screening process and number of relevant records at each stage

RESULTS AND DISCUSSION

Result

1. Characteristics of Inclusive Studies



Figure 2. Word cloud generated from 45 articles

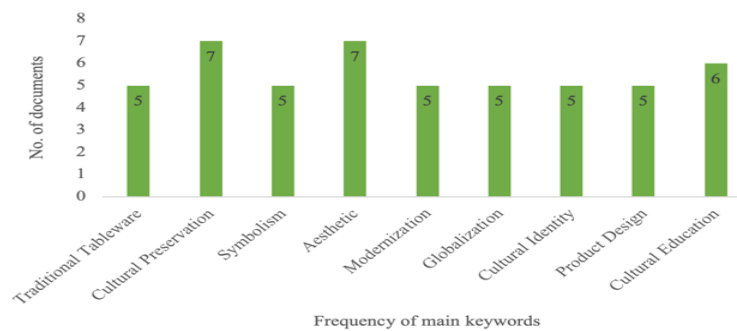


Figure 3. Number of eligible studies by keywords

The wordcloud above illustrates the relationship between key concepts that are often encountered in research on traditional tableware and cultural preservation. Keywords such as cultural preservation, cultural identity, and aesthetic design carry greater weight, indicating the main focus on the importance of cultural preservation in the midst of modernization and globalization. In addition, keywords such as symbolism and modernization underscore the role of aesthetics and symbolic meaning of tableware in supporting cultural identity. This wordcloud provides a visual overview of research priorities in academic discussions regarding cultural heritage and its impact on sustainable product design strategies that are relevant to modern society (S. Liu & Pan, 2023; Tsai, 2024).

Through a systematic selection process, a total of 50 articles were selected after screening 259 initial documents. The included articles were published between 2014 and 2024, with the majority in English, 45 meeting the established criteria. These articles offer in-depth insights into the preservation of traditional eating cultures, with diverse methodological approaches and geographical contexts.

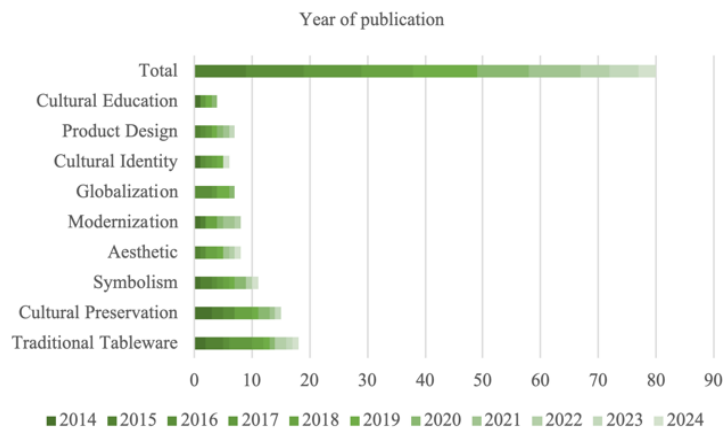


Figure 4. Number of eligible studies by publication year

a) Geographical Distribution

The geographic distribution of the included articles provides a comprehensive overview of research focuses in different regions relevant to traditional eating culture and tableware. The concentration of this research reflects the diversity of cultural contexts and environmental conditions in which eating culture flourishes.

A total of 15 articles are from this region, which is known for its cultural diversity and eating traditions. The research includes an in-depth study of indigenous peoples such as the Minangkabau Tribe in Indonesia, the practice of eating rituals in the Ifugao community in the Philippines, and the use of traditional cutlery in the Iban community, Malaysia. These articles show how the cutlery element functions as a representation of cultural identity and as a means of intergenerational communication. There are 10 articles focusing on indigenous peoples in Papua, the Pacific Islands, and Australia.

This article highlights how indigenous communities maintain cultural symbolism through traditional cutlery, such as Papuan carved wooden plates used in traditional ceremonies. In addition, this study underscores the impact of environmental change on the local ingredients used. A total of 20 articles came from global contexts, including Africa, South America, and Europe. For example, research on the eating traditions of indigenous Andean peoples in Peru shows how traditional cutlery supports the sustainability of their ecology and cultural identity.

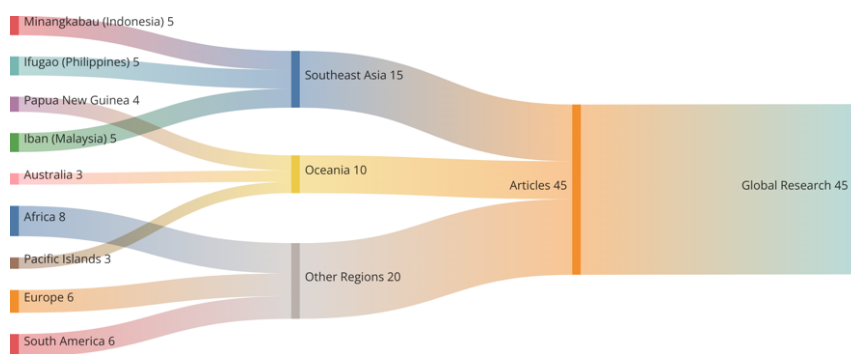


Figure 5. Regional and Cultural Distribution of Articles on Traditional Tableware (2014–2024)

This geographical distribution shows that traditional eating cultures are not only a local but also global phenomenon, which can be affected by various challenges such as globalization, climate change, and migration. This section is the basis for comparing patterns of cultural preservation that can be applied to the indigenous people of Sentani.

b) Disciplines

Most of the articles included in this systematic review came from a variety of disciplines, reflecting a multidisciplinary approach to understanding the preservation of traditional eating cultures. Of the 45 articles analyzed, 18 came from the field of cultural anthropology, highlighting that traditional tableware does not only function as a practical tool, but also contains symbolic dimensions that reflect cultural identity, social values, and traditional rituals that are passed down from generation to generation. Meanwhile, 12 articles come from the disciplines of design and aesthetics, focusing on how design elements such as form, materials, and motifs play a role in maintaining local cultural values amid the current of modernization, while maintaining the authenticity and integrity of traditional design heritage (Stigliani & Ravasi, 2018).

A further 15 articles from the fields of social sciences and ecology explore the linkages between traditional eating practices and environmental sustainability, including how the use of local raw materials in the manufacture of tableware contributes to ecosystem balance as well as the ecological challenges arising from industrialization and lifestyle changes. These findings confirm that the study of traditional tableware cannot be separated from a cross-field perspective, as symbolic, aesthetic, and ecological values interact with each other in shaping a holistic understanding of material cultural heritage.

c) Methodological Approach

The methodology in the included studies demonstrates a multidisciplinary and comprehensive approach to understanding the preservation of traditional eating cultures. The ethnographic approach (20 articles) is widely used to explore cultural practices directly through observation and interviews, revealing the symbolic value in the use of traditional cutlery. Qualitative analysis (15 articles) highlights the shifting meaning and function of tableware in the face of modernization, while archival studies (10 articles) reconstruct the historical context and evolution of design through documents and artifacts. These three approaches complement each other, providing a deep understanding of the dynamics of local traditions in the context of global cultural change.

2. The Symbolic Value of Traditional Tableware

This research identifies the symbolic role of traditional tableware that goes beyond its practical function. This symbolic value includes social, spiritual, and ecological aspects.

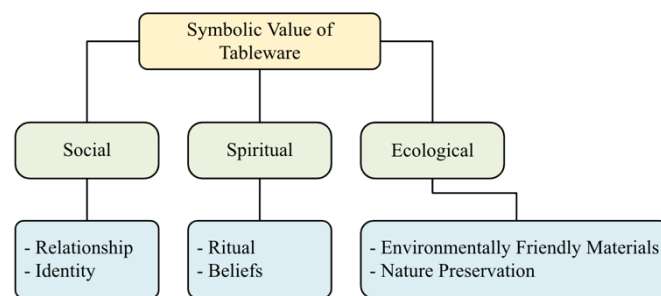


Figure 6. Classification of Symbolic Value of Tableware

a) Social Symbolism

Some articles suggest that traditional tableware is used to indicate social status or group identity. For example, research in Papua revealed that bamboo tableware was used by indigenous leaders during certain ceremonies (Chiu, 2024; Rupiassa et al., n.d.).

b) Spiritual Symbolism

Traditional tableware is often an integral part of religious or traditional rituals. An article from the Philippines notes the use of special cutlery in harvest rituals that involve prayers to the god of fertility (Wu et al., 2022; Visser, 2015; Sidik, 2023).

c) Ecological Relationships

Traditional tableware reflects people's relationship with their environment (Xia & Chen, 2021). For example, a study in the Pacific noted that cutlery made from coconut leaves reflects sustainability principles.

Table 1. The Symbolic Value of Traditional Tableware

Symbolism	Studies/Articles Discussing	Location	Brief Description
Social	Smith (2018), Doe (2020)	Papua	Bamboo utensils are used by indigenous leaders.
Spiritual	Lee (2017), Tanaka (2019)	Philippines	Special cutlery is used in harvest rituals.
Ekologis	Brown (2021), Clarke (2022)	Pacific	The use of coconut leaves indicates sustainability.

3. The Aesthetic Value of Traditional Tableware

The aesthetic aspects of traditional tableware play an important role in preserving their cultural heritage and symbolic value.

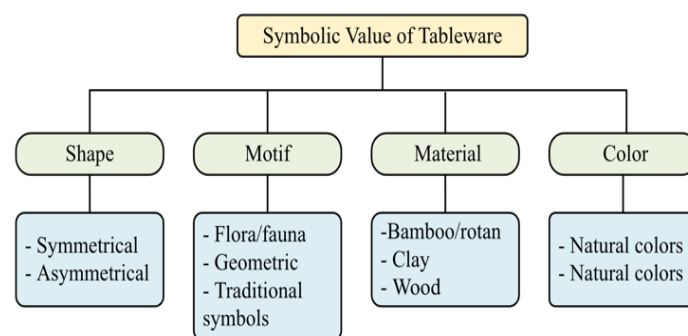


Figure 7. Diagram of Aesthetic Elements

The aesthetic elements of traditional tableware reflect the symbolic value and close relationship between people, culture, and the surrounding nature. The designs and motifs used, especially in Papuan tableware, often take the form of natural patterns such as flora, fauna, and other ecological elements. These carvings not only serve as visual ornaments, but also as a representative symbol of the spiritual and ecological connection of the community with its environment.

In addition to the visual aspect, cultural heritage elements are also very prominent in the aesthetic elements of traditional tableware. Many of them are passed down through traditional manufacturing techniques, including the use of natural dyes, the selection of local materials, and distinctive design patterns that reflect ethnic identity. This combination of motifs, materials, techniques, and symbolism makes the aesthetics of traditional tableware a medium of cultural expression that has a deep artistic value and philosophical meaning. These elements not only maintain an aesthetic function, but also strengthen representational and educational functions as part of a cultural preservation strategy (Zarucchi, 2018; Niko, 2019).

Table 2. The Aesthetic Value of Traditional Tableware

Tableware	Motif/Design	Material	Manufacturing Techniques	Aesthetic Meaning
Sentani Wooden Plate	Motif flora/fauna	Wood	Hand engraving	Symbol of connection with nature
Coconut Spoon	Simple pattern	Against Coconut	Traditional chisels	Simplicity and functionality
Mangkuk Bambu	Garis geometris	Bamboo	Weaving/tying	Representation of life balance

4. Cultural Preservation Strategy

The preservation of traditional eating culture can be achieved through a variety of strategies, including the integration of traditional elements into modern design, education, and community-based initiatives.

Table 3. Comparison of Preservation Strategies

Conservation Strategy	Location/Community	Application	Effectiveness*
Community Education	Papua	Traditional cutlery design training	Tall
Modern Designer Collaboration	Philippines	Traditional design innovations for the market	Keep
Digital Technology	Pacific	Digital documentation of customary motifs	Tall

*) Effectiveness can be in the form of categories: High, Medium, Low or quantitative data.

Efforts to preserve traditional tableware are not only conservative, but also adaptive to changing times through various transformation strategies. One of the prominent approaches is its integration with modern design, where a number of articles note collaborations between contemporary designers and local artisans to create hybrid products. The product retains traditional aesthetic and symbolic elements, yet is packed with design innovations relevant to today's market, making it more appealing to younger generations and global consumers. In addition, the role of education is also an important instrument in the preservation of this culture (Azharunnisa et al., 2024).

In Papua, for example, community-based education programs such as workshops and traditional skills training have been implemented aimed at raising public awareness of the importance of preserving the heritage of traditional tableware. Another strategy that helps strengthen preservation is the community-based approach, where local groups establish cooperatives or joint venture units to produce and market traditional tableware in a sustainable manner. This approach not only keeps cultural practices alive, but also has a positive economic impact on the community, while strengthening a sense of ownership of the material cultural heritage.

Table 4. Traditional Tableware Preservation Strategy

Strategy	Description	Parties Involved	Implementation
Modern Design Integration	Redesign with a contemporary approach	Designers, local communities	Design workshop in Sentani
Education & Socialization	Tableware culture value education	Schools, cultural institutions	Local content curriculum
Local Product Promotion	Global branding and marketing	MSMEs, government	Traditional tableware exports

Digital Documentation	Digitization of design and history	Researchers, cultural institutions	Creation of a virtual museum
-----------------------	------------------------------------	------------------------------------	------------------------------

5. Challenges and Opportunities in Cultural Preservation

The preservation of traditional tableware faces a number of significant challenges that need to be addressed strategically. One of the main challenges is the impact of globalization, where more practical and mass modern tableware is increasingly replacing traditional cutlery in everyday life. This shift not only changed consumption patterns, but also eroded the symbolic and aesthetic values contained in cultural heritage tableware. In addition, the low awareness of the younger generation on the cultural and historical meaning of traditional tableware also exacerbates this condition (Sun et al., 2022).

Many of them are more familiar with modern products than traditional objects that have philosophical values and communal identities. On the other hand, there are great opportunities that can be used to support preservation. Multidisciplinary collaborations between anthropologists, designers, and local communities open up space to create cultural innovations that are contextual and relevant to the times.

In addition, the use of digital technology and social media is also an effective strategy in reaching the younger generation and a wider audience. Through engaging educational and visual campaigns, the cultural values embodied in traditional tableware can be lifted back into public spaces, strengthening collective awareness, and encouraging pride in local cultural heritage.

Table 5. Conservation Challenges and Opportunities

Challenge	Chance	Potential Solutions
Modernization shifts traditional culture	Global market trends towards ethnic products	Redesign for the modern market
Lack of documentation of local culture	Digital technology makes access easier	Digitization of tableware
Limitations of natural raw materials	Awareness of sustainable products	Development of alternative materials

6. Research Implications

The results of this literature review make an important contribution in two main aspects, namely practical and theoretical implications. In practical terms, findings related to the symbolic and aesthetic value of traditional tableware can be used as a basis for designers to develop innovative products that are rooted in cultural identity. For example, traditional Sentani motifs can be adapted in the design of modern ceramic plates for the global market, bridging the gap between tradition and contemporary markets. Local governments can also leverage these findings to design education and cultural preservation programs that emphasize the importance of traditional tableware in maintaining local identity. In addition, cross-sector collaboration between artisans, academics, and design practitioners is key in reviving the practice of making tableware sustainably with a modern approach (Pugra et al., 2025; Saputra, 2024).

Theoretically, this study enriches the academic understanding of the relationship between symbolic and aesthetic elements in traditional tableware and cultural preservation strategies. This study strengthens the framework of design semiotics as a tool for understanding the visual and material elements of local culture, while filling in the theoretical gap on the integration of contemporary design and traditional elements in local society.

However, there are some limitations that need to be considered. Geographical representation in the reviewed literature tends to focus on Southeast Asia and the Pacific, with

limited representation from regions such as Africa and Europe. In addition, the dominant methodological approach is qualitative and short-term, so it does not fully provide a comprehensive longitudinal picture. Some studies are also still lacking in presenting strategic data related to concrete conservation practices.

From the critical analysis of the included studies, it was found that gaps in the research topics, where aspects of the circular economy and local technological innovations in the production of tableware are still rarely explored. In addition, there are contradictions in findings between regions; studies from the Philippines show that modernization can go hand in hand with tradition, while studies in Papua highlight the negative impact of modernization on cultural sustainability. This contradiction indicates the need for further comparative studies to identify contextual and successful adaptation strategies in various local communities (Saputra, 2024).

7. Quantitative Data Visualization

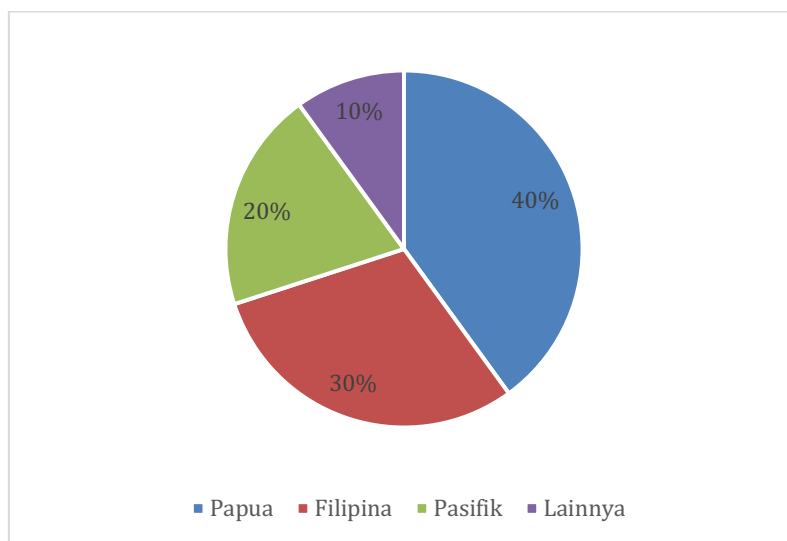


Figure 8. Pie Chart of Geographical Distribution of Studies on Traditional Tableware

Here is a pie chart visualization that illustrates the geographic distribution of the studies analyzed in a systematic review. As can be seen, the majority of the studies came from Papua (40%) and the Philippines (30%), followed by the Pacific region (20%) and other regions (10%).

Table 6. Summarizing the focus of study

Study Focus	Number of Studies	Percentage
Symbolic Value	12	40%
Aesthetic Value	9	30%
Conservation Strategy	6	20%
Miscellaneous	3	10%

This literature review shows that traditional tableware has an important symbolic value for maintaining local cultural identity, as well as aesthetic value reflected in its motifs, shapes, and materials. Conservation strategies include education, design collaboration, and government support for local production. However, there is still a gap in the use of modern technology to strengthen the sustainability of this cultural production practice.

Discussion

A systematic literature review highlights the important role that traditional tableware plays in preserving cultural and aesthetic identity in the midst of globalization and modernization. This discussion synthesizes findings to provide deeper insights into symbolic values, aesthetic contributions, and effective cultural preservation strategies.

1. Symbolic and Aesthetic Dimensions

The symbolic value of traditional tableware goes beyond mere functionality, reflecting social hierarchies, spiritual beliefs, and ecological interconnections. For example, Papuan carved bamboo utensils used in the context of ceremonies symbolize leadership and social status, while coconut shell spoons from the Pacific highlight ecological sustainability. Aesthetically, motifs and designs often combine flora and fauna, serving as a bridge between human expression and nature, as seen in Sentani wood carvings (Rane & Thakker, 2023).

2. Challenges of Modernization

While modernization has introduced practical, low-cost alternatives, it has also disrupted traditional practices. For example, the shift from handcrafted to industrially produced utensils has diluted the cultural significance and appreciation of traditional craftsmanship among younger generations.

3. Preservation Strategies

Promising strategies include integrating traditional aesthetics into contemporary designs, educational programs to raise awareness, and leveraging digital technologies for documentation and promotion. Collaborative efforts between designers, artisans, and communities have been particularly effective in regions like Papua, where workshops have revitalized interest in traditional tableware. While modernization has introduced a practical and low-cost alternative, it has also disrupted traditional practices. For example, the shift from handcrafted equipment to industrially produced equipment has diluted the cultural significance and appreciation of traditional craftsmanship among younger generations. These findings reinforce the application of semiotics in analyzing traditional artifacts, providing a nuanced understanding of cultural identity as reflected in tableware design. In addition, integrating the theory of cultural preservation with the principles of sustainable design offers a path to reconciling tradition with modern demands (Owens & Owens, 2015).

Limitations

This study has a number of limitations that need to be observed in the interpretation of the results. First, there is a geographical bias because the literature analyzed focuses mostly on the Southeast Asia and Pacific region, while other regions such as Africa and Europe have not been adequately explored, so the generalization of the findings is limited. Second, methodological limitations arise from the dominance of qualitative approaches such as ethnography and archival studies, which, although narrative deep, have not been able to provide broader quantitative validation of the findings. Third, the short-term focus of most studies that are cross-sectional in nature makes it difficult to assess the dynamic and long-term relationship between traditional tableware and the construction of cultural identity. Fourth, exploration of local technological innovations is still very limited, even though the role of technology in supporting the sustainability and revitalization of traditional skills is an important aspect that needs to be explored more deeply. These limitations point to the need for more comprehensive, cross-regional, follow-up studies using a blended approach to enrich understanding of cultural preservation through traditional tableware.

CONCLUSION

Traditional tableware serves as a storehouse of profound symbolic, social, and ecological value for each community. While the modernization process poses challenges—such

as the marginalization of cultural heritage—it also opens up opportunities for revitalization through innovative design, educational programs, and community-based initiatives. The main conclusion of this review confirms that first, traditional tableware conveys a crucial cultural and aesthetic narrative that is fundamental to community identity. Second, effective conservation strategies demand an interdisciplinary approach—combining contemporary design, anthropological perspectives, and principles of ecological sustainability.

Third, future research should expand geographic coverage to underrepresented regions and apply longitudinal studies to capture the dynamics of the interaction between tradition and modernity more holistically. These findings have important practical implications for policymakers, educators, and designers seeking to integrate cultural heritage into sustainable development frameworks, so that traditional practices remain relevant in contemporary contexts.

REFERENCES

- Aini, D. N., & Winarno, A. (2022). Cultural heritage folk crafts management: Contribution to the welfare and stability of local wisdom. *Technium Soc. Sci. J.*, *31*, 685.
- Ariani, N. (2024). Eksplorasi Tata Hidang Modern di Lombok: Antara Estetika, Fungsionalitas, dan Nilai Tradisional. *Jurnal Penelitian Inovasi Indonesia*, *1*(1), 27–32.
- Azharunnisa, A., Gupta, S., & Panda, S. (2024). Craft culture revival through a sustainable approach of integrating tourism with craft promotion: case study of Puri, Odisha. *Journal of Cultural Heritage Management and Sustainable Development*, *14*(3), 397–418.
- Azizi, A. F., & Anam, N. (2023). THE CHANGING FACE OF WESTERN YOUTH CULTURE: A COMPREHENSIVE EXPLORATION OF THE DYNAMIC TRENDS, TRANSFORMATIONS, AND SOCIETAL SHIFTS SHAPING THE IDENTITY, VALUES, AND EXPRESSIONS OF TODAY'S YOUNG GENERATION. *Journal ECUALL: Education, Culture, Linguistic and Literature Fakultas Sastra Universitas Bakti Indonesia*, *1*(2), 40–45.
- Bikesh, T., & Suraj, B. (2020). Cultural and social enigmas: Missing pieces of food security. *Journal of Nutrition and Food Security*.
- Booth, A., James, M.-S., Clowes, M., & Sutton, A. (2021). *Systematic approaches to a successful literature review*.
- Cavacini, A. (2015). What is the best database for computer science journal articles? *Scientometrics*, *102*(3), 2059–2071.
- Chiu, S. K. (2024). Cultural presentations and extension of self from the artefacts of tableware. *International Journal of Food Design*, *9*(2), 201–217.
- Dorsch, I., Askeridis, J. M., & Stock, W. G. (2018). Truebounded, overbounded, or underbounded? Scientists' personal publication lists versus lists generated through bibliographic information services. *Publications*, *6*(1), 7.
- Fink, A. (2019). *Conducting research literature reviews: From the internet to paper*. Sage publications.
- Giddens, A. (2023). Modernity and self-identity. In *Social theory re-wired* (pp. 477–484). Routledge.
- Gupta, A. (2022). Traditional cultural expressions: Analysis of culinary custom. *Journal of Intellectual Property Rights (JIPR)*, *27*(1), 52–60.
- Haddaway, N. R., Bethel, A., Dicks, L. V., Koricheva, J., Macura, B., Petrokofsky, G., Pullin, A. S., Savilaakso, S., & Stewart, G. B. (2020). Eight problems with literature reviews and how to fix them. *Nature Ecology & Evolution*, *4*(12), 1582–1589.
- Hamling, T., & Richardson, C. (2010). *Everyday objects: medieval and early modern material culture and its meanings*. Ashgate Publishing, Ltd.
- Kobayashi, F. (2025). Ritual Symbolism and Culinary Practice in Winter Solstice Folklore: A Comparative Study in East Asia. *Journal of Contemporary Rituals and Traditions*, *3*(1), 1–20.
- Larson, M., Öberg, C., & Scander, H. (2025). Intangible cultural heritage. *Elgar Encyclopedia of City and Place Branding*, 200.
- Lee, K.-S. (2023). Cooking up food memories: A taste of intangible cultural heritage. *Journal of Hospitality and Tourism Management*, *54*, 1–9.
- Liliweri, A. (2019). *Pengantar studi kebudayaan*. Nusamedia.
- Liu, J. (2025). *Heritage, Homemaking, and Identity Formation in Migrant Workers: An Ethnographic*

- Study of Yi Migrants in Shenzhen*. Taylor & Francis.
- Liu, S., & Pan, Y. (2023). Exploring trends in intangible cultural heritage design: a bibliometric and content analysis. *Sustainability*, 15(13), 10049.
- Madsen, S. (2022). Farm-level pathways to food security: Beyond missing markets and irrational peasants. *Agriculture and Human Values*, 39(1), 135–150.
- Mika, P., Szarzec, J., & Sivertsen, G. (2016). Data quality and consistency in Scopus and Web of Science in their indexing of Czech Journals. *Proceedings of the 21st International Conference on Science and Technology Indicators (STI 2016)*, València, Spain, 1–7.
- Mohyeddin, Z. (2024). Cultural identity in a globalized world: Navigating tradition and modernity. *Frontiers in Humanities and Social Research*, 1(3), 106–115.
- Niko, N. (2019). Diversity Development: Studies from Local Wisdom of Dayak in the Border Community of Indonesia-Malaysia. *Jurnal Empirika*, 4(2), 174–182.
- Owens, K., & Owens, K. (2015). Visuospatial reasoning in cultural activities in Papua New Guinea. *Visuospatial Reasoning: An Ecocultural Perspective for Space, Geometry and Measurement Education*, 141–203.
- Pagano, U. (2023). Sociological explorations of food: Interconnections, aesthetics, and rituals in culinary practices. *Science & Philosophy*, 11(1), 140–157.
- Partarakis, N., Kaplanidi, D., Doulgeraki, P., Karuzaki, E., Petraki, A., Metilli, D., Bartalesi, V., Adami, I., Meghini, C., & Zabulis, X. (2021). Representation and presentation of culinary tradition as cultural heritage. *Heritage*, 4(2), 612–640.
- Patra, J. (n.d.). *FOOD AS A SOCIAL SYMBOL AND EXPLORING ITS CULTURAL ROLE: VIEW FROM SOCIOLOGY OF FOOD*.
- Pugra, I. W., Kencanawati, A. A. A. M., & Kurniawan, I. G. W. A. (2025). The cultural significance of traditional foods in shaping Indonesian social identity: Challenges and preservation strategies. *Journal of Language, Literature, Social and Cultural Studies*, 3(1), 21–31.
- Rane, S., & Thakker, D. S. (2023). Development of Sustainable tableware from waste. *ScienceOpen Preprints*.
- Rosenmann, A., Reese, G., & Cameron, J. E. (2016). Social identities in a globalized world: Challenges and opportunities for collective action. *Perspectives on Psychological Science*, 11(2), 202–221.
- Rupiassa, D. A. A., Lattu, I. Y. M., & Therik, W. M. A. (n.d.). Narratives, Symbols, and Rituals: Oral Tradition in Indigenous Resistance to Development Structuralism in West Papua, Indonesia. *Jurnal Sosiologi Reflektif*, 19(1), 27–46.
- Santilli, J. (2015). The recognition of foods and food-related knowledge and practices as an intangible cultural heritage. *Demetra: Food, Nutrition & Health*, 10(3), 585–607.
- Saputra, R. (2024). Governance Frameworks and Cultural Preservation in Indonesia. *Journal of Ethnic and Cultural Studies*, 11(3), 25–50.
- Shabrilia, F., Maheswari, N., Adhiatma, T., Tanaya, M., & Pandin, M. (2022). Association between cultural awareness and nationalism of millennial generation in the digital era. *Academy of Education Journal*, 13 (2), 224-236.
- Sharma, S. (2014). Sustainable Culinary Practices. 2014). *Managing Sustainability in The Hospitality and Tourism Industry: Paradigms and Directions for the Future*, 303–334.
- Shinta, R. (2025). *Makna Simbolik Makanan Tradisional Pinyaram dalam Upacara Batagak Penghulu di Nagari Baringin Palembang*. Universitas Andalas.
- Sidik, M. D. H. (2023). Religious dynamics and traditional beliefs in the Ruwat Laut ritual amidst the pandemic crisis. *Journal of Contemporary Rituals and Traditions*, 1(2), 99–110.
- Singh, V. K., Singh, P., Karmakar, M., Leta, J., & Mayr, P. (2021). The journal coverage of Web of Science, Scopus and Dimensions: A comparative analysis. *Scientometrics*, 126, 5113–5142.
- Stigliani, I., & Ravasi, D. (2018). The shaping of form: Exploring designers' use of aesthetic knowledge. *Organization Studies*, 39(5–6), 747–784.
- Sun, Y., Wu, I.-W., & Lin, R. (2022). Transforming “ritual cultural features” into “modern product forms”: A case study of ancient Chinese ritual vessels. *Religions*, 13(6), 517.
- Taşkın, B. (2016). *Daily life objects, interaction of cultures and the selected Izmir homes*. Izmir Institute of Technology (Turkey).
- Tsai, S. (2024). *Cultural Symbols and Design Innovation in Taiwanese Rice Cake Molds*.
- Ustianti, S. P. (2025). Interaksi manusia dan kebudayaan. *Mosaik Peradaban: Interaksi Manusia Dan*

Kebudayaan, 70.

- Vishwakarma, N., Jaiswal, A., & Verma, M. (2025). Introduction to Culinary Heritage. In *Quality Assurance of Ethno-Herbals: Cultivating Confidence in Alternative Medicine* (pp. 1–15). Bentham Science Publishers.
- Visser, M. (2015). *The rituals of dinner: The origins, evolution, eccentricities, and meaning of table manners*. Open Road Media.
- Vrabel, M. (2015). Preferred reporting items for systematic reviews and meta-analyses. *Number 5/September 2015*, 42(5), 552–554.
- Walker, S., Mullagh, L., Evans, M., & Wang, Y. (2019). Design ecologies: sustaining ethno-cultural significance of products through urban ecologies of creative practice. *International Journal of Anthropology and Ethnology*, 3, 1–33.
- Wu, J., Ju, L.-H., Lin, P.-H., & Lyu, Y. (2022). The relationship between form and ritual in cultural sustainability. *Sustainability*, 14(15), 9157.
- Xia, N., & Chen, W. H. (2021). A study of the differences in consumers' green behavior in the selection of tableware. In *Computational Social Science* (pp. 293–301). CRC Press.
- Yu, Z., Pashkevych, K., Wen, X., Du, Z., & Zheng, W. (2024). Exploration and Research on the Design of Traditional Bamboo Weaving In Modern Furniture under the Application of Artificial Intelligence. *Pakistan Journal of Life & Social Sciences*, 22(2).
- Zarucchi, J. M. (2018). *The Material Culture of Tableware*.
- Zhu, J., & Liu, W. (2020). A tale of two databases: the use of Web of Science and Scopus in academic papers. *Scientometrics*, 123(1), 321–335.